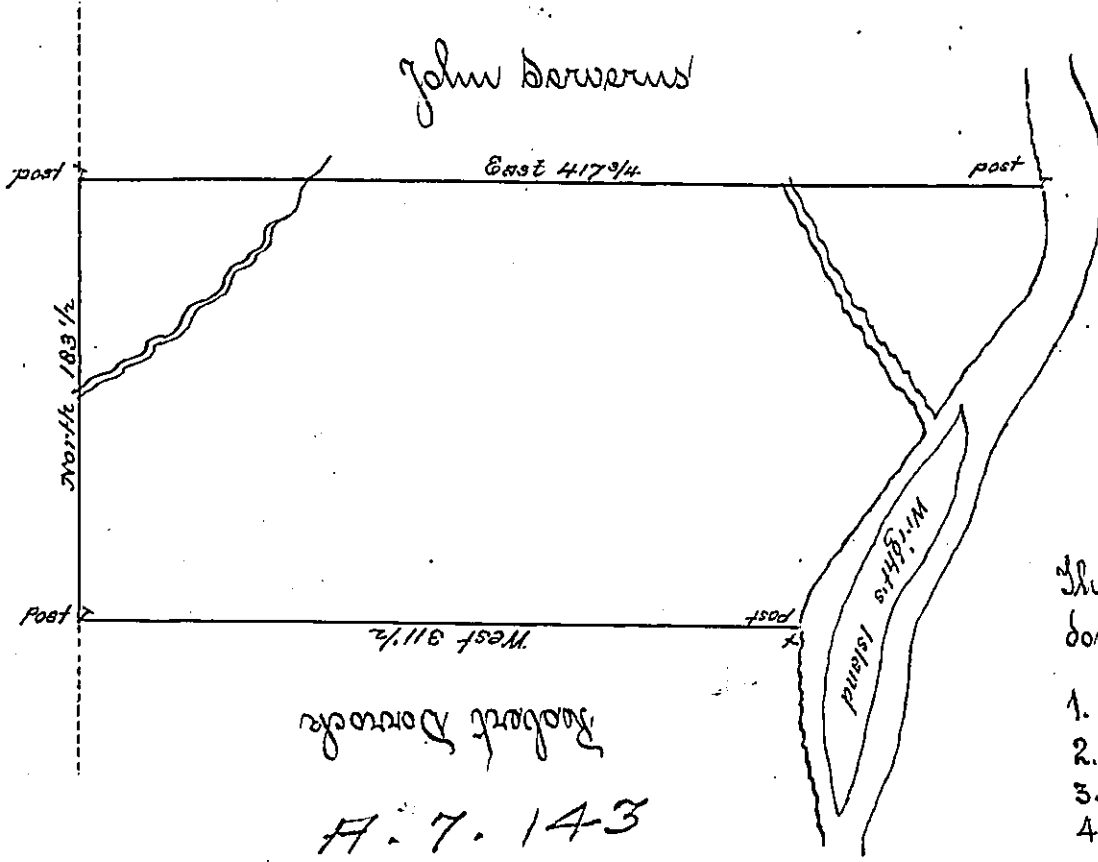


C-205-21-

John Dewees

Z.-136

Dee's land



Robert Norcock

H. 7. 143

The bearing & dist.
down Rali are

- 1. S 5 E - 17.
 - 2. S 20 W. 13.
 - 3. S 35 W 180.
 - 4. South 2
- 217.

By virtue of a Warrant dated the 11th September 1784 surveyed the 5th October 1788 to William Burges the above described tract of land situate on the West side of Rali River about four miles from Bear Creek in Northampton County containing four hundred acres and the allowance of six per Cent &c

Daniel Brodhead Esquire
Surveyr General

J Geo Palmer

IN TESTIMONY that the above is a copy of the original remaining on file in the Department of Internal Affairs of Pennsylvania, made conformably to an Act of Assembly approved the 16th day of February, 1833, I have hereunto set my Hand and caused the Seal of said Department to be affixed at Harrisburg, this ninth day of November 1903.

Francis P. Brown
Secretary of Internal Affairs.